

## **PLANK** carved wall tile

Respect the rectangle (and its incredible design potential). Plank carved wall tile lets you build a range of designs, from classic herringbones to random stacks of dots and dashes. What's Morse code for "all while reducing noise"? Made from sound-absorbing PET felt, this carved wall tile is available in TURF's 9 mm felt colors.



# SPECS

## PRODUCT

Plank carved wall tile

## CONTENT

Polyester (PET) felt  
60% pre-consumer recycled

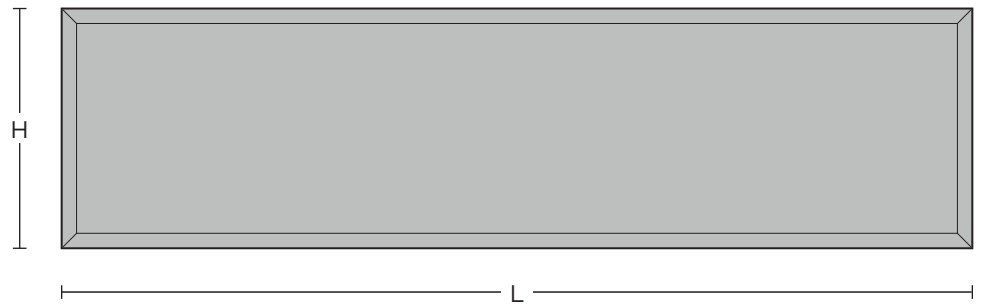
## FELT THICKNESS

9 mm

## BEVELED EDGE

Carved at a 45° angle  
4.5 mm from the bottom

## ELEVATION



# DIMENSIONS

TURF's carved wall tiles are made to order. These suggested sizes fit nicely together, but any size is available up to 47" square.

## STANDARD LENGTHS

11.75" L  
23.5" L  
47" L

## MAX LENGTH

47" L

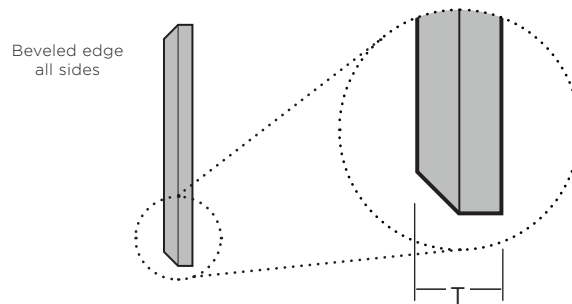
## STANDARD HEIGHTS

3" H  
4.5" H  
6" H

## MAX HEIGHT

47" H

## SIDE ELEVATION

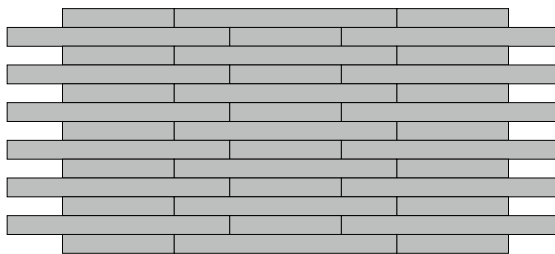


# LAYOUT

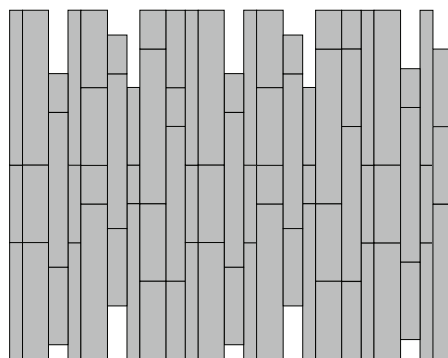
With nine different standard sizes and 17 colors, Plank's simple shape can make complex patterns.

Trim Plank tiles in the field to accommodate doorways and corners.

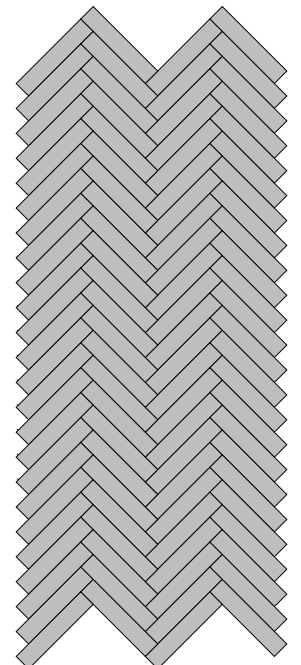
We recommend ordering additional materials to account for on-site trimming and adjustments as site conditions require.



running bond with alternating 47" L x 6" H and 23.5" L x 6" H tiles



semi-stacked vertical bond with all nine standard sizes



herringbone of 11.75" L x 6" H tiles

# 9MM FELT

This product is made with 9 mm PET felt board. The process used to create PET felt often results in a heathered effect where multiple tones are present. Slight variations in color should be expected when using this sustainable material.

Felt thickness is 9 mm +/- 0.5 mm.

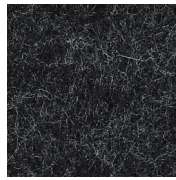
**Monitors and printers vary. Please request a material sample to verify felt colors.**

## Looking for the old color palette?

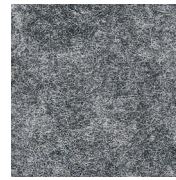
Old colors are still available for legacy projects, but check with us for availability if you're interested in using them for new projects.



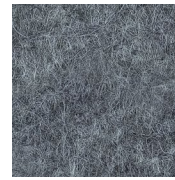
07 BLACK



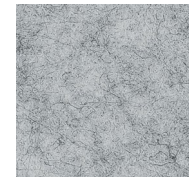
06 CHARCOAL



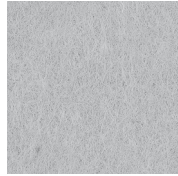
09 DAMASCUS



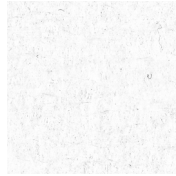
98 STORM



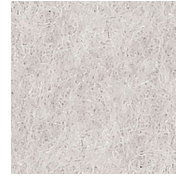
04 LIGHT GREY



66 PEWTER



50 IVORY



01 CREAM



33 LUMINARY



05 WHITE



35 BARK



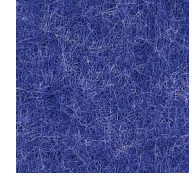
34 TONAL TAUPE



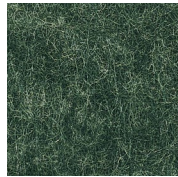
82 BARLEY



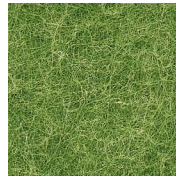
83 HOLLAND OATS



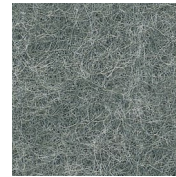
24 ROYAL BLUE



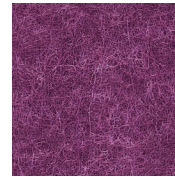
10 TOPO GREEN



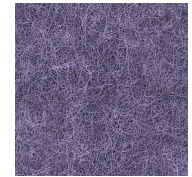
12 GRASSHOPPER



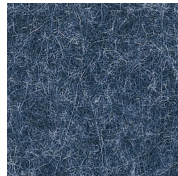
11 CELADON



40 MAGENTA



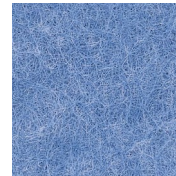
41 DRIED LAVENDER



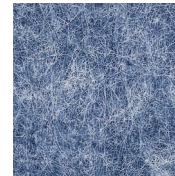
28 INDIGO



30 CYAN



31 AZURE



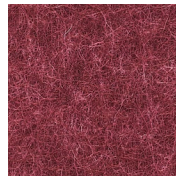
27 JEAN JACKET



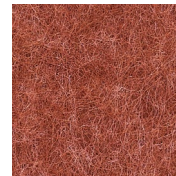
26 FADED DENIM



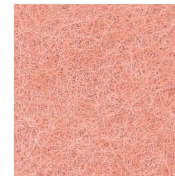
23 RED



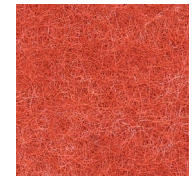
15 MERLOT



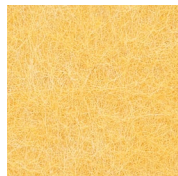
18 ULTISOL



17 BLUSH



43 ORANGE CRUSH



63 SAFFLOWER



64 PLANTAIN

# TECH

## ACOUSTICS

ASTM C423-17: Type A Mounting

## FIRE RATING

ASTM E-84 - Class A

## VOC

ASTM D5116 Compliant



**3mm + 9mm PET Acoustic Panel**  
TURF Design

**Final Assembly:** Gilberts, Illinois, USA  
**Life Expectancy:** 50 Year(s)  
**End of Life Options:** Salvageable/Reusable in its Entirety, Recyclable (100%)

**Ingredients:**  
PET, Flame Retardant: N,N'-Ethylene bis(Stearamido), White Tint: Antioxidant 1076; Antioxidant KY-405; Stearic Acid

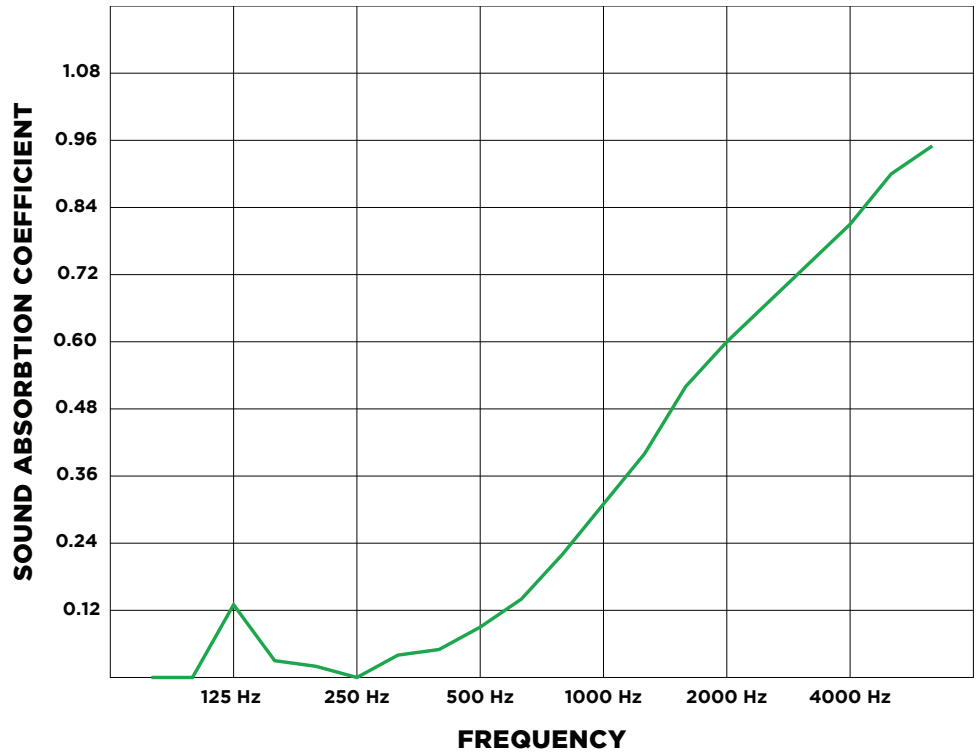
**Living Building Challenge Criteria:** Compliant

**I-13 Red List:**  
 LBC Red List Free % Disclosed: 100% at 100ppm  
 LBC Red List Approved VOC Content: Not Applicable  
 Declared

**I-10 Interior Performance:** CDPH Standard Method v12-2017  
**I-14 Responsible Sourcing:** Not Applicable

TFD-0002  
EXP 01 DEC 2022  
Original Issue Date: 2019

INTERNATIONAL LIVING FUTURE INSTITUTE™ living-futures.org/declare



9MM TILE: NRC = 0.25

ASTM C 423-17: Type A Mounting. Carved wall tile NRC varies depending on field conditions and arrangement. Contact TURF for testing details.

# INSTALLATION

Plank is available with or without an adhesive backing. More information is available in the carved wall tile installation instructions.

## LEAD TIME

Check the Turf website for current lead times.

## WARRANTY

Three (3) years

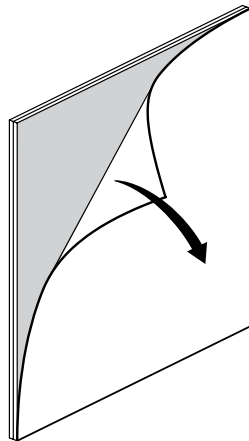
## MAINTENANCE

Vacuum occasionally to remove any particulate matter and air-borne debris or dust. Compressed air can be used to dust the material in difficult to reach areas for large assemblies. Use standard household cleaners for spot cleaning.

## CUSTOM

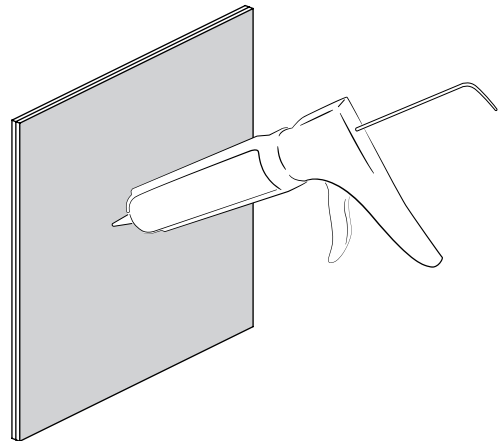
Plank carved wall tiles may be customized with additional layers and colors. Contact your rep for details.

## ADHESIVE BACKING



A manufacturer-applied adhesive backing is available. The pressure-activated backing instantly adheres to a variety of wall surfaces.

## CONSTRUCTION ADHESIVE



Carved wall tiles without an adhesive backing should be installed with a construction-grade adhesive specified by the contractor.