



Standard Excelon® | Premium Excelon®

Vinyl Composition Tile



Standard Excelon® Imperial® Texture: 51910 Classic Black, 57518 White Out, 57532 Grayson, 57538 Heat Wave, 57541 Bay Blue, 57548 Cypress

# A Legacy of Trusted Performance

---

VCT offers the right combination of color, pattern, and performance to meet the demand of modern interiors. Its durable construction ensures lasting beauty in high-traffic areas, while flowing linear patterns and non-directional visuals effectively mask scuffs and soil. With decades of proven performance, VCT is a classic, economical value with a low carbon footprint.



**Standard Excelon® Imperial® Texture** – Hello, color! With more than 100 colors to choose from, Imperial Texture provides the perfect palette for any commercial space. It features a non-directional, tone-on-tone visual in a popular 12 in. x 12 in. format.



57518 White Out



51933 Blue Cloud



52514 Jubilee White



51941 Polar White



51929 Sandy Beach



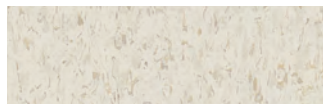
52513 Cirque White



52500 Carnival White



52505 Harlequin White



51899 Cool White



51911 Classic White



59234 Silk



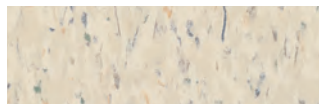
51836 Shelter White



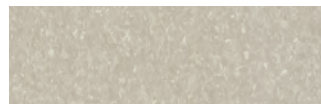
59237 Tracery



51839 Fortress White



52520 Faire White



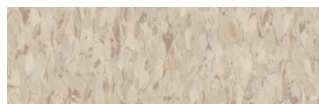
51876 Mint Cream



51810 Washed Linen



51811 Antique White



51858 Sandrift White



51809 Desert Beige



51873 Brushed Sand



51908 Pewter



51877 Earth Green



51883 Dusty Miller



59236 Linseed



51805 Camel Beige



57501 Nougat



51801 Doeskin Peach



51905 Hazelnut



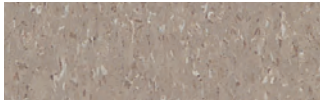
57502 Café Latte



51830 Cottage Tan



51928 Pebble Tan



51804 Earthstone Greige



51901 Taupe



51803 Pearl White



57504 Chocolate



59243 Tannin



51868 Smokey Brown



59240 Peat



51927 Field Gray



51904 Sterling



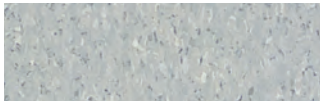
51915 Charcoal



51861 Soft Warm Gray



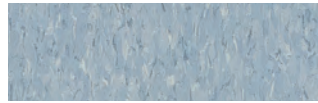
51860 Soft Cool Gray



51807 Shadow Blue



51903 Blue/Gray



51932 Lunar Blue



51916 Dutch Delft



51820 Marina Blue



51946 Genetian Blue



51910 Classic Black



57531 Go Blue



57535 Blue Moon



51821 Caribbean Blue



57541 Bay Blue



57539 Shoreline



51824 Sea Green



57542 Tropical Green



57537 Alligator



57546 Lime Zest



57510 Kickin' Kiwi



51812 Lemon Yellow



57509 Lemon Lick



57536 Sun Gold







57516 Screamin' Pumpkin



57538 Heat Wave



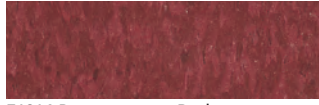
57534 Ruby Red



51880 Maraschino



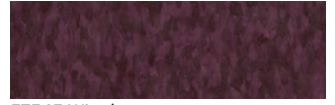
51816 Cherry Red



51814 Pomegranate Red



57514 Shocking



57545 Wineberry



57530 Crimson



57544 Adobe



57533 Tiger Eyes



51800 Buttercream Yellow



51878 Golden



59241 Honey



51869 Humus



59244 Patina



51942 Curried Caramel



59235 Impasto



51866 Little Green Apple



51885 Granny Smith



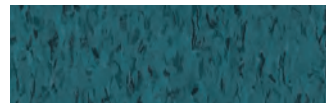
51881 Blueberry



51874 Grayed Blue



57506 Colorado Stone



57548 Cypress



51938 Willow Green



51872 Tea Garden Green



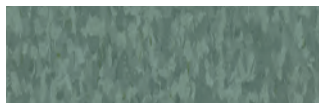
51906 Teal



51802 Silver Green



51875 Mid Grayed Blue



57547 Eucalyptus



51947 Basil Green



57532 Grayson



51882 Serene Blue



57508 Blue Dreams



57517 Bodacious Blue



59230 Victoria Blue



57551 Perfect Storm



57543 Lavender Fields



Premium Excelon® Raffia® Stream™: 55900 Avalanche, 55923 Dark Sky, Natural Creations®: NA180 Galena Oak, Rye

# Building Better

---

VCT is designed with the principles of circular economy in mind. Each tile has a carbon footprint of 0.25 kg CO<sub>2</sub>e, which is about the same greenhouse gas emissions as 0.1 gallons of gasoline\*. The low carbon footprint of VCT can be attributed to product composition and efficient manufacturing processes that incorporate both pre- and post-consumer content.

- Manufactured with 85% North American limestone
- Low VOC & FloorScore® certified
- Recyclable through the On&On® Recycling Program
- Health Product Declaration (HPD) and third-party certified Environmental Product Declaration (EPD) available
- Made in the USA with global and domestic content

\*United States Environmental Protection Agency, Greenhouse Gas Equivalencies Calculator



**Premium Excelon® Raffia® Stream™** features streaming accents over a rich contrasted base in a larger format, 12 in. x 24 in. tile. The color palette includes rich bold hues, tranquil neutral tones, and pops of color ideal for educational settings.



55900 Avalanche



55929 Blizzard



55930 Opal



55927 Dust



55924 Equinox



55940 Horizon



55926 Earth



55901 Rain



55935 Jade



55934 Moonlight



55922 Thunderstorm



55923 Dark Sky



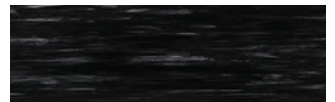
55921 Shamrock



55937 Electricity



55933 Grey Cloud



55928 Winter Solstice



55920 Solar



55938 Flame





Premium Excelon® Crown Texture™: 5C899 Cool White, 5C908 Pewter

**Premium Excelon® Crown Texture™**, featuring a smaller chip size, and offers a sophisticated monolithic visual in classic and accent colors. Available in 12 in. x 12 in. tiles.

**Raffia® Stream™ 10 Year Commercial Limited Warranty**

Supported by a 10 Year Commercial Limited Warranty. Add 10 years of overall warranty coverage by using Strong System™ subfloor preparation products. Visit [ArmstrongFlooring.com](http://ArmstrongFlooring.com) for more information.

**Imperial® Texture | Crown Texture™ Stonetex® | Feature™ Tile | 5 Year Commercial Limited Warranty**

Supported by a 5 Year Commercial Limited Warranty. Add 10 years of overall warranty coverage by using Strong System™ subfloor preparation products. Visit [ArmstrongFlooring.com](http://ArmstrongFlooring.com) for more information.



5C234 Silk



5C858 Sandrift White



5C899 Cool White



5C236 Linseed



5C861 Soft Warm Gray



5C908 Pewter



5C811 Antique White



5C805 Camel Beige



5C803 Pearl White



5C904 Sterling



5C237 Tracery



5C240 Peat



5C901 Taupe



5C868 Smokey Brown



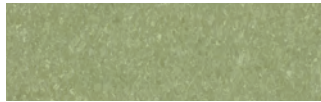
5C915 Charcoal



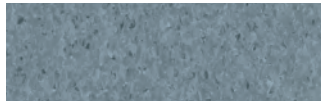
5C910 Classic Black



5C878 Golden



5C866 Little Green Apple



5C875 Mid Grayed Blue



5C230 Victoria Blue



5C880 Maraschino



**1. Exclusive Fast Start® Factory Finish**

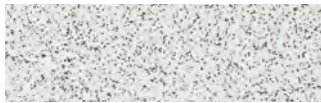
Designed to protect the tile prior to installation and make initial maintenance quick and easy. It provides a smooth and even surface

**2. Through-Color/Pattern Wear Layer**

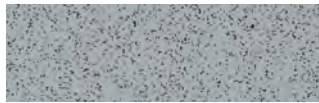
Durable structure that retains its beauty despite impact from high traffic and rolling loads. If the surface wears or becomes damaged, the same color and pattern will be visible throughout the structure



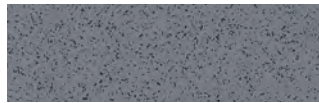
**Premium Excelon® Stonetex®**, captures the appeal of natural stone and a granite-like appearance in a durable VCT structure. Available in 12 in. x 12 in. tiles.



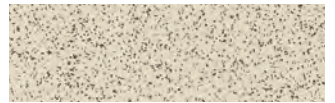
52140 Chalk White



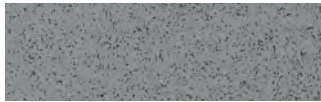
52126 Gravel Blue



52160 Hematite



52139 Limestone Beige



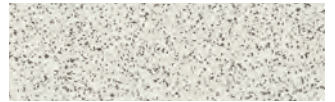
52125 Granite Gray



52161 Charcoal



52144 Coal Black



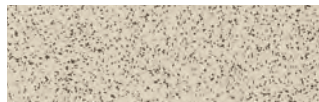
52127 Stone White



52122 Pebble Gray



52147 Pumice Stone



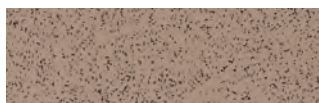
52128 Desert Dust



52143 Sandstone Tan



52149 Cocoa Brown



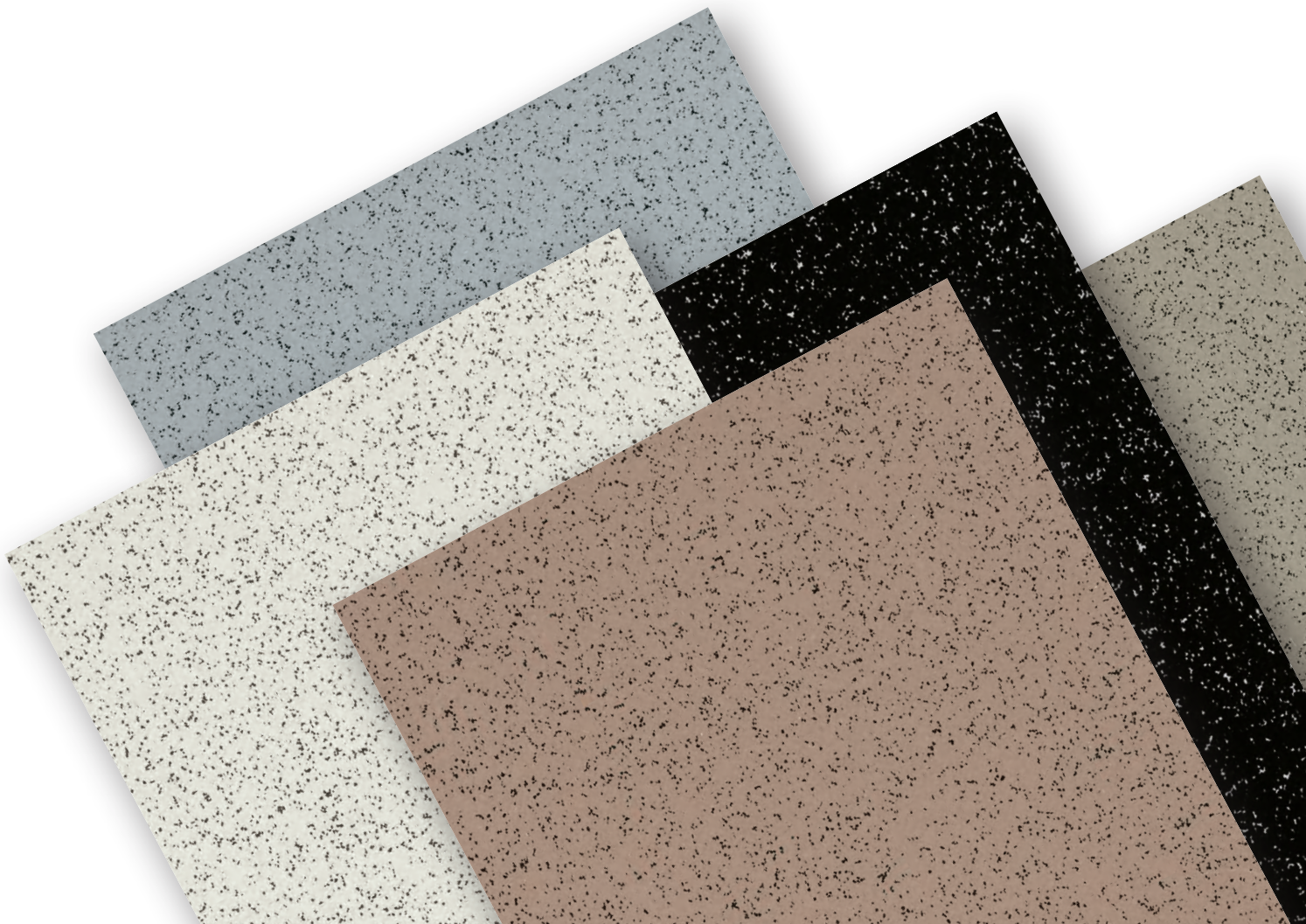
52166 Mochaccino



52155 Forest Moss

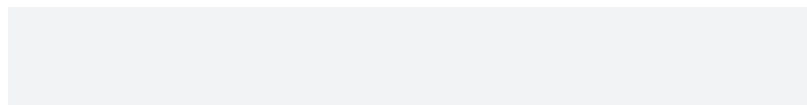


Premium Excelon® Stonetex®: 52139 Limestone Beige, 52147 Pumice Stone





**Premium Excelon® Feature™ Tile and Strips**, create accents, borders, and custom insets in classic solid colors. Tiles are available in 12 in. x 12 in. and Feature Strips 2, 4 and 6 in. x 24 in. long.



56830 Chalk II – 12 in. x 12 in.

50830 – 2, 4, 6 in. x 24 in.



56823 Yellow II – 12 in. x 12 in.

50823 – 2, 4, 6 in. x 24 in.



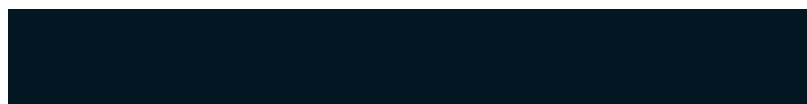
56812 Blue II – 12 in. x 12 in.

50812 – 2, 4, 6 in. x 24 in.



56806 Red II – 12 in. x 12 in.

50806 – 2, 4, 6 in. x 24 in.



56790 Black I – 12 in. x 12 in.

50790 – 2, 4, 6 in. x 24 in.



Premium Excelon® Feature™ Tile & Strips: 56830 Chalk II, 56790 Black I

## Product Information

**Construction** - Vinyl Composition Tile

**International Specifications** - ASTM F1066,  
Class 2 Through Pattern

**Overall Thickness** - 1/8 in. (3.2 mm)

**Wear Layer Thickness** - 1/8 in. (3.2 mm)

**Size** - Imperial® Texture, Crown Texture™, Stonetex®,

Feature™ Tile - 12 in. x 12 in.

Feature Strips - 2, 4, 6 in. x 24 in.

Raffia® Stream™ - 12 in. x 24 in.

**Factory Finish** - Fast Start®

**Installation** - S-515, S-525

**Maintenance Options** - Polish

Color and visual variation is inherent in all resilient products. Prior to installation, we recommend reviewing multiple tiles.

---

# ArmstrongFlooring™

Walk On. Walk Strong.™



**Visit ArmstrongFlooring.com**

for complete Product, Technical,  
Adhesives, Installation and  
Maintenance recommendations.



Print#: FP7440F8684A-821

Printed in USA. | Armstrong and the Armstrong logo are under license from AWI Licensing LLC. | All other trademarks are owned by AFI Licensing LLC. | © 2021 AFI Licensing LLC. FloorScore® is a registered trademark of the Resilient Floor Covering Institute.